

# Mistral D4D Aerosol Spray

## 100mlv/100 test papers

### Presumptive, preliminary drug testing for trace & substance levels of drugs of abuse



Mistral Security's spray aerosols provide one of the fastest and easiest to use, presumptive drug tests for fast, accurate and efficient field-testing use, making them the most cost efficient field test available. Detecting both trace and substance levels of drugs these kits are inexpensive to use, and easy to handle.

Drug Detection and Identification products have the capability to identify an illicit substance as well as "detect" residues that cannot be seen. All wet chemistry products are highly sensitive with results appearing in just seconds and are based on colorimetric reagents that produce a unique colour when they come into contact with narcotic substances.

Aerosol contains sufficient volume to provide 100 test results with 100 test papers



#### Features :

- Preliminary detection and identification of 4 drugs from a single trace collection
- Detects Marijuana/Hashish, Heroin, Amphetamines & Methamphetamines

#### Sensitivity in nanograms to mm<sup>2</sup> :

**Meth 64ng/mm<sup>2</sup>**                      **AMP 318ng/m<sup>2</sup>**  
**Heroin 6369ng/mm<sup>2</sup>**                **PCP 318ng/mm<sup>2</sup>**

### Drug Test Capabilities

Drug Type	Aerosols	PenTests	Presumptive Drug Tests
Amphetamines, Cannabis, Narcotics, Opiates	D4D	D4D	n/a
Amphetamines, Narcotic Alkaloids	D4D	D4D	Mayer's; Marquis
Amphetamines	D4D	D4D	Mandeline
Barbiturates	Barbitusol	Barbitusol	Dille-Koppanyi
Bath Salts	D4D	D4D	MDPV; Mephedrone
Buprenorphine	D4D	D4D	n/a
Cocaine/Crack	Coca	Coca	Scott's
Ephedrine	D4D	D4D; Ephedrine	Chen's
GHB/GBL	n/a	n/a	GHB
Heroin: Black Tar	n/a	n/a	Mecke's
Heroin: White, Brown	D4D; Herosol	D4D; Herosol	Mecke's
Ketamine	D4D	D4D	Morris
LSD	D4D; Herosol	D4D; LSD	Ehrlich's
Marijuana	D4D; Cannabis	D4D; Cannabis	Duquenois-Levine; KN
Meth/Ecstasy	D4D; Meth-X	D4D; Meth-X	Methamphetamine; Ecstasy
Methadone	D4D; Herosol	D4D	Methadone
Methaqualone	n/a	n/a	Methaqualone; PCP
Codeine; Heroin, Morphine; Oxycodone	D4D; Herosol	D4D; Opiatest	Opiates
PCP	D4D; Coca	D4D	PCP
Pentazocine	D4D	D4D	Talwin
PMA	D4D	D4D	Lieberman's
Propoxyhene	D4D	D4D	Propoxyphene
Psilocybin	D4D	D4D	Psilocybin
Spice/K2	D4D	D4D	n/a
Vallium/Rohypnol	n/a	BZO	Vallium/Rohypnol

Drugcheck NZ • PO Box 44-373, Point Chevalier, Auckland 1246

• P 64 9 8494512 • M 64 022 538 1609,

E : drugcheck@drugcheck.co.nz W : drugcheck.co.nz

## D4D Surface Wipe Pentest For the Drugs of Abuse

Manufactured in the United States to meet US Government regulations, the Mistral Pentest D4D is ampoule-based technology that detects both bulk and trace amounts of drugs and their residue on surfaces.

Pentest is a colourmetric drug detection and identification field test addressing the requirements for fast, accurate, easy to use substance/surface testing that can detect and identify amounts of illicit drugs without the need of a "controlled" substance to detect its presence. Presumptive testing with colourmetric reaction.

Kits are inexpensive and easy to use and handle for surface testing with recommended sampling area 4m<sup>2</sup>. Please read **instructions overleaf thoroughly prior** to testing.

### D4D Multi Drug Detection for :

- D4D general screening—Marijuana, Heroin, Amphetamine, Methamphetamine, PCP, Morphine, Methdone, Codeine, Keta-mine, Ephedrine-Psudeoehedrine

D4D will identify ***unknown illicit substances on surfaces*** .

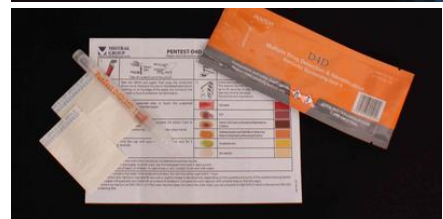
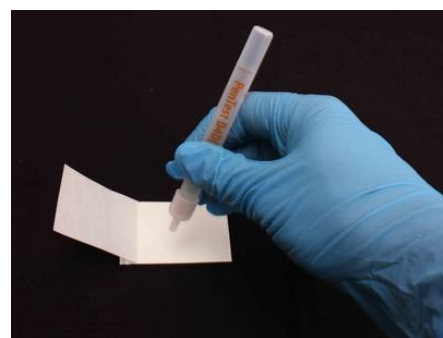
### With sensitivity in nanograms per mm<sup>2</sup>

- Meth 64
- Amp 318
- Heroine 6369
- PCP 318
- THC/Marijuana sensitivity can not be stated as trials were inconclusive as to sensitivity
- 

Pentest is designed to be used over the **largest surface area possible**, giving you the best possible chance at achieving a readable colour reaction. (4m<sup>2</sup>)

Each D4D foil pouch contains :

- two papers (one is used to test and the other is used as a "control" - for colour indication)
- ampoule pen
- instructions with colour indicator chart



## What standards are in place for testing?

In short, there are no standards for methamphetamine testing and clean-up in New Zealand. In 2010, the Ministry of Health released guidelines which are used by councils to assess risk. While they don't explicitly confirm a safe level, they establish a currently acceptable level post-remediation: less than 0.5 micrograms per 100 square metres. Guidelines around the world adopt a range of acceptable levels: 0.05-1.5mcgs. These levels shouldn't pose a health risk to most people. Institute of Environmental Science and Research says it can't comment on testing undertaken by commercial operations for remediation purposes: "Sensitivity and specificity may vary depending on the techniques being employed by different operators." However it says as far as it knows, there are no testing standards commercial operators must meet. "A number of overseas jurisdictions have promulgated testing standards".

However, Standards New Zealand has recently established a committee that will begin looking at introducing standards for commercial operators."

## Can I do a simple preliminary test without the expense of lab testing?

Yes, by using the D4D product, a fast, cost-effective preliminary contamination test can be conducted that will give you a result in minutes. Should a preliminary test show a positive result, we always strongly recommend that further testing be carried out to confirm that the contamination is in fact meth, and how high the levels are.

Preliminary drug residue detection relies on a colour reaction achieved by a minimum quantity of residue per mm of test paper being present.

Preliminary drug residue detection kits provide the greatest opportunity to achieve a Colour reaction when used over the largest surface area possible **but by no means can offer a certain answer as to the presence of drug residue in exact quantities due to the inconsistencies in each persons testing methods and the lack of use of lab equipment.** The minimum surface area is a guide only.

[For further details see our Meth FAQ's](#)

<http://www.drugchek.co.nz/Info/FAQs.html>